

FOR LEASE

OFFICE SPACE

17200 E 10 MILE RD
Eastpointe, MI



AVAILABLE:

Suite 140 - 655 SF
Suite 160 - 1,100 SF
Suite 200 - 2,600 SF *
Suite 220 - 1,750 SF *
Suite 235A - 500 SF
* Suites 200 & 220 can be combined for 5,400 SF

USE:

Office

LEASE RATE:

\$10.00/ SF/ YR, Modified Gross

LOCATION:

On 10 Mile Road just east of Gratiot Avenue and 1.5 Miles west of I-94.

SUMMARY:

Newly renovated office building. Signage rights and ample parking available. Minutes from I-94 and I-696. Close to area amenities: banks, retail, restaurants, medical practices, and more.

FORWARD COMMERCIAL GROUP
6785 TELEGRAPH RD, SUITE 250
BLOOMFIELD HILLS, MI 48301
www.forwardcommercial.com

Geoff Kotila
Senior Sales Associate
248.662.5066 Office
geoff@forwardcommercial.com

CoStar
POWER BROKER
2017 Top Firm Award

OVERVIEW

17200 E 10 MILE RD

500 SF - 5,400 SF

OFFICE SPACE

AVAILABLE

DEMOGRAPHICS	1 MILE	3 MILE	5 MILE
POPULATION	20,185	147,525	361,234
HOUSEHOLDS	7,902	59,444	142,592
MEDIAN HOME VALUE	\$69,563	\$95,472	\$111,628

PROPERTY HIGHLIGHTS

- Elevator
- Lots of windows
- Signage rights available
- Ample parking

PROPERTY SUMMARY

- Price: \$10.00/ SF/ YR, Modified Gross
- Year Renovated: 2018
- 2nd floor suites can be combined
- Building: 40,600 SF



FORWARD COMMERCIAL GROUP
6785 TELEGRAPH RD, SUITE 250
BLOOMFIELD HILLS, MI 48301
www.forwardcommercial.com

Geoff Kotila
Senior Sales Associate
248.662.5066 Office
geoff@forwardcommercial.com

 CoStar™
POWER BROKER
2017 Top Firm Award

PROPERTY PHOTOS

17200 E 10 MILE RD

500 SF - 5,400 SF

OFFICE SPACE

AVAILABLE



FORWARD COMMERCIAL GROUP
6785 TELEGRAPH RD, SUITE 250
BLOOMFIELD HILLS, MI 48301
www.forwardcommercial.com

Geoff Kotila
Senior Sales Associate
248.662.5066 Office
geoff@forwardcommercial.com

 CoStar™
POWER BROKER
2017 Top Firm Award

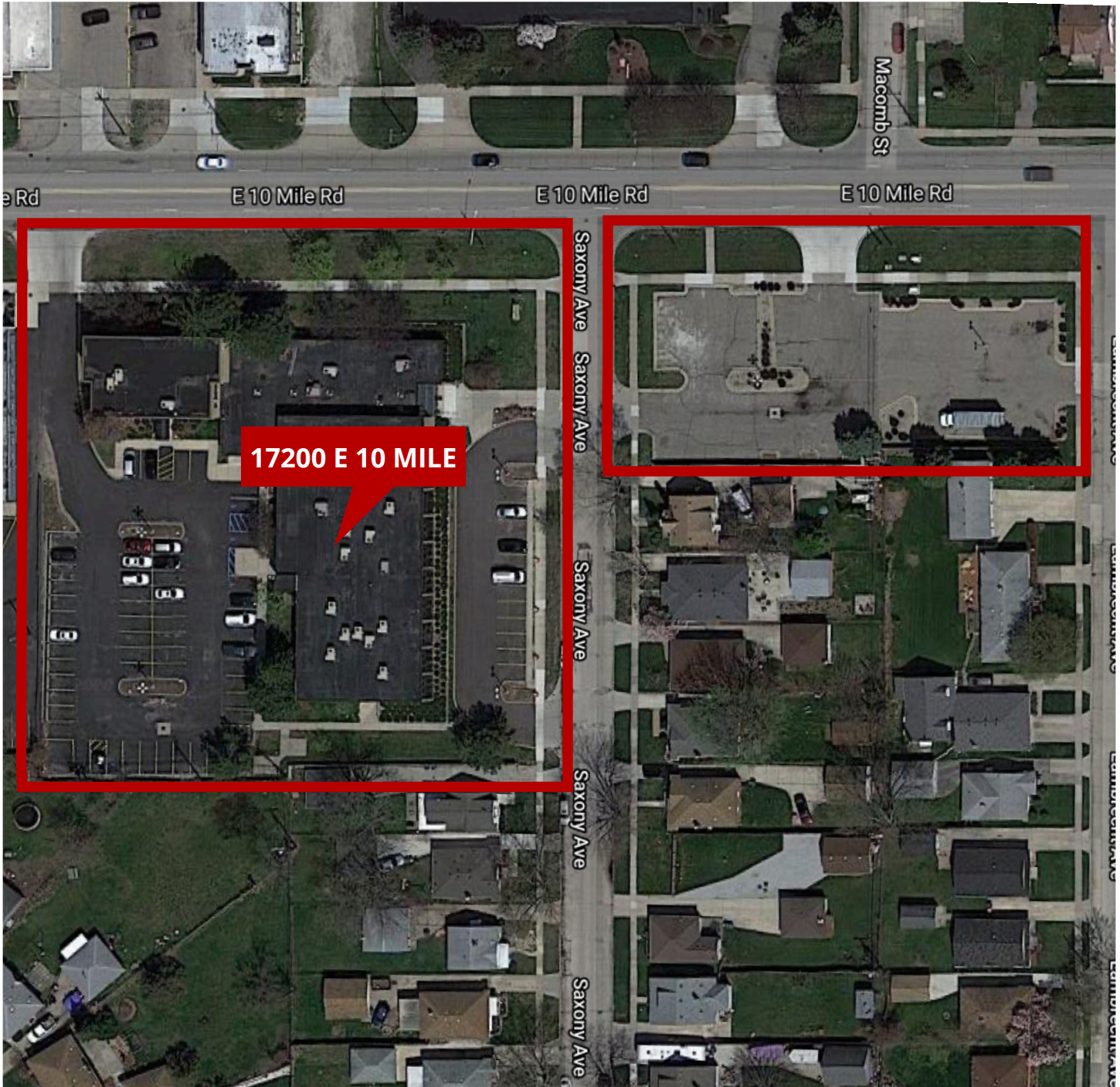
AERIAL MAP

17200 E 10 MILE RD

500 SF - 5,400 SF

OFFICE SPACE

AVAILABLE



FORWARD COMMERCIAL GROUP

6785 TELEGRAPH RD, SUITE 250
BLOOMFIELD HILLS, MI 48301
www.forwardcommercial.com

Geoff Kotila

Senior Sales Associate
248.662.5066 Office
geoff@forwardcommercial.com



POWER BROKER

2017 Top Firm Award

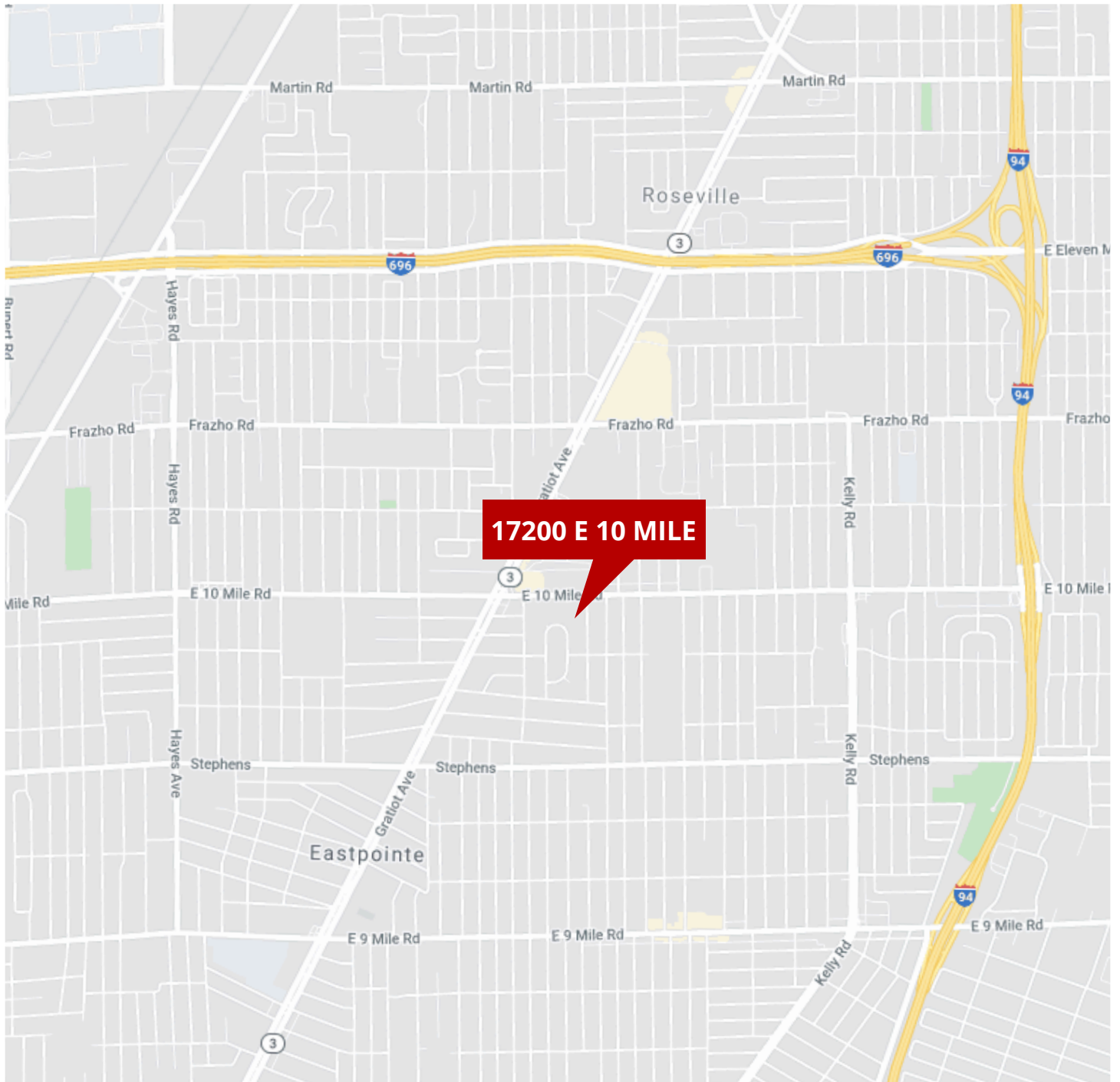
STREET MAP

17200 E 10 MILE RD

500 SF - 5,400 SF

OFFICE SPACE

AVAILABLE



FORWARD COMMERCIAL GROUP
6785 TELEGRAPH RD, SUITE 250
BLOOMFIELD HILLS, MI 48301
www.forwardcommercial.com

Geoff Kotila
Senior Sales Associate
248.662.5066 Office
geoff@forwardcommercial.com

 CoStar
POWER BROKER
2017 Top Firm Award