

FOR LEASE



1,250 SF UP TO 5,000 SF
RETAIL / MEDICAL / OFFICE

40000 HAYES ROAD
CLINTON TWP, MI



AVAILABLE:

1,250 SF up to 5,000 SF

USE:

Retail

LEASE RATE:

\$10.00/ SF/ YR, Gross + Utilities

JOIN TENANTS:

Subway, B&D Nails, Great Lakes Animal Hospital,
Golden Gate Restaurant, and more.

LOCATION:

On Hayes Road, between 17 & 18 Mile Road.

SUMMARY:

Newly renovated retail center, including new parking lot. Centrally located between 17 & 18 Mile Roads. Close to University Center, Lakeside Mall, Dodge Park and more. Great exposure with frontage on Hayes, high daytime traffic, and dense population. Ample parking. Signage rights.

FORWARD COMMERCIAL GROUP
6785 TELEGRAPH RD, SUITE 250
BLOOMFIELD HILLS, MI 48301
www.forwardcommercial.com

Emil Cherkasov
Principal Broker
248.662.5066 Office
emil@forwardcommercial.com



OVERVIEW

40000 HAYES RD.
1,250 SF UP TO 5,000 SF
RETAIL

DEMOGRAPHICS	1 MILE	3 MILE	5 MILE
POPULATION	15,366	107,847	287,041
HOUSEHOLDS	6,234	45,773	116,679
MEDIAN HOME VALUE	\$218,618	\$183,815	\$182,003

PROPERTY HIGHLIGHTS

- Great visibility
- Located near Lakeside Mall and many other retailers
- Signage rights available
- Ample parking

PROPERTY SUMMARY

- Price: \$10.00 /SF /YR, Gross + Utilities
- Year Renovated: 2018
- Lot Size: 4 Acres
- Center Size: 21,200 SF



FORWARD COMMERCIAL GROUP
6785 TELEGRAPH RD, SUITE 250
BLOOMFIELD HILLS, MI 48301
www.forwardcommercial.com

Emil Cherkasov
Principal Broker
248.662.5066 Office
emil@forwardcommercial.com



PROPERTY PHOTOS

40000 HAYES RD.
1,250 SF UP TO 5,000 SF
RETAIL



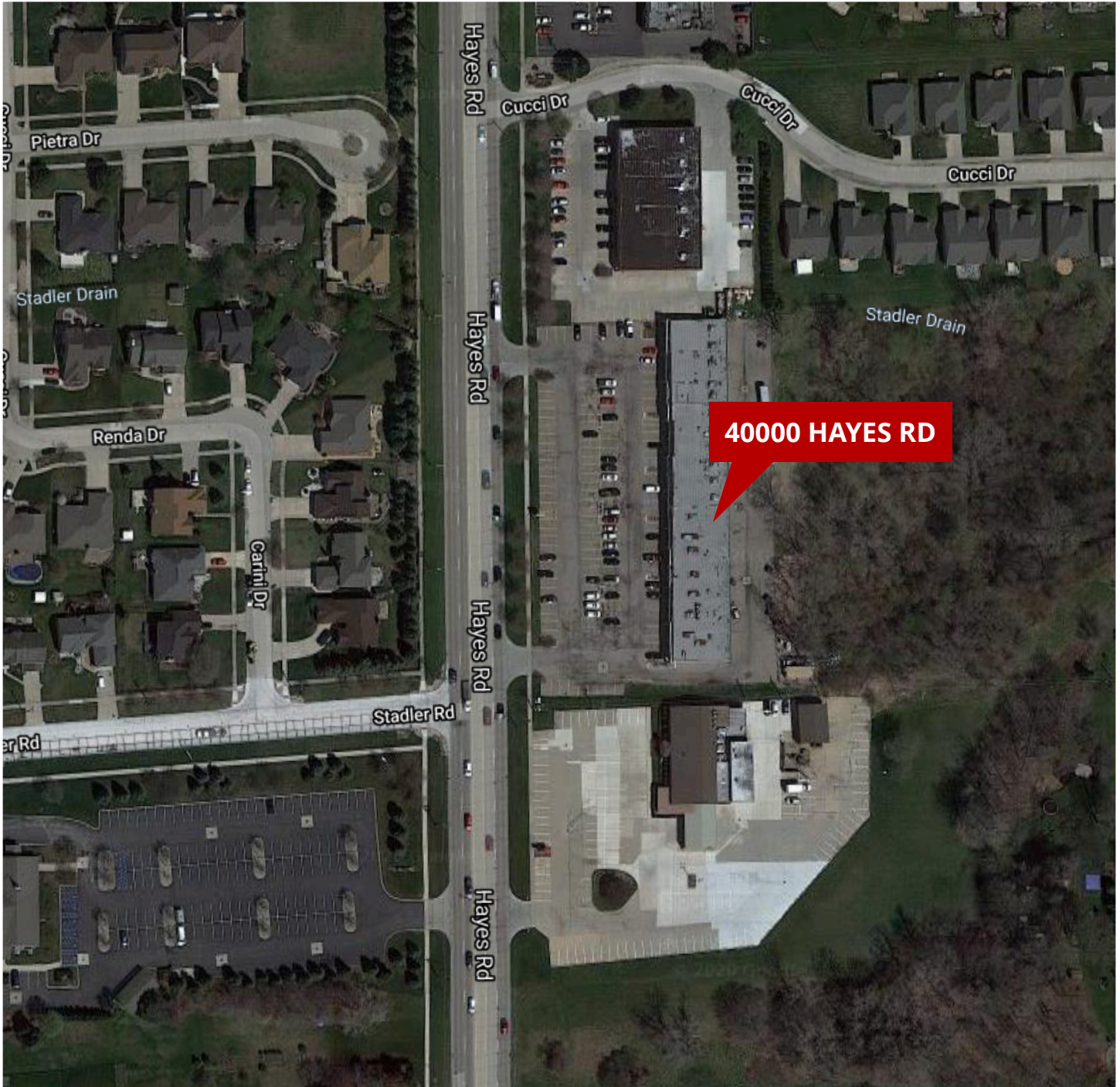
FORWARD COMMERCIAL GROUP
6785 TELEGRAPH RD, SUITE 250
BLOOMFIELD HILLS, MI 48301
www.forwardcommercial.com

Emil Cherkasov
Principal Broker
248.662.5066 Office
emil@forwardcommercial.com



AERIAL MAP

40000 HAYES RD.
DENSE POPULATION
HIGH DAYTIME TRAFFIC



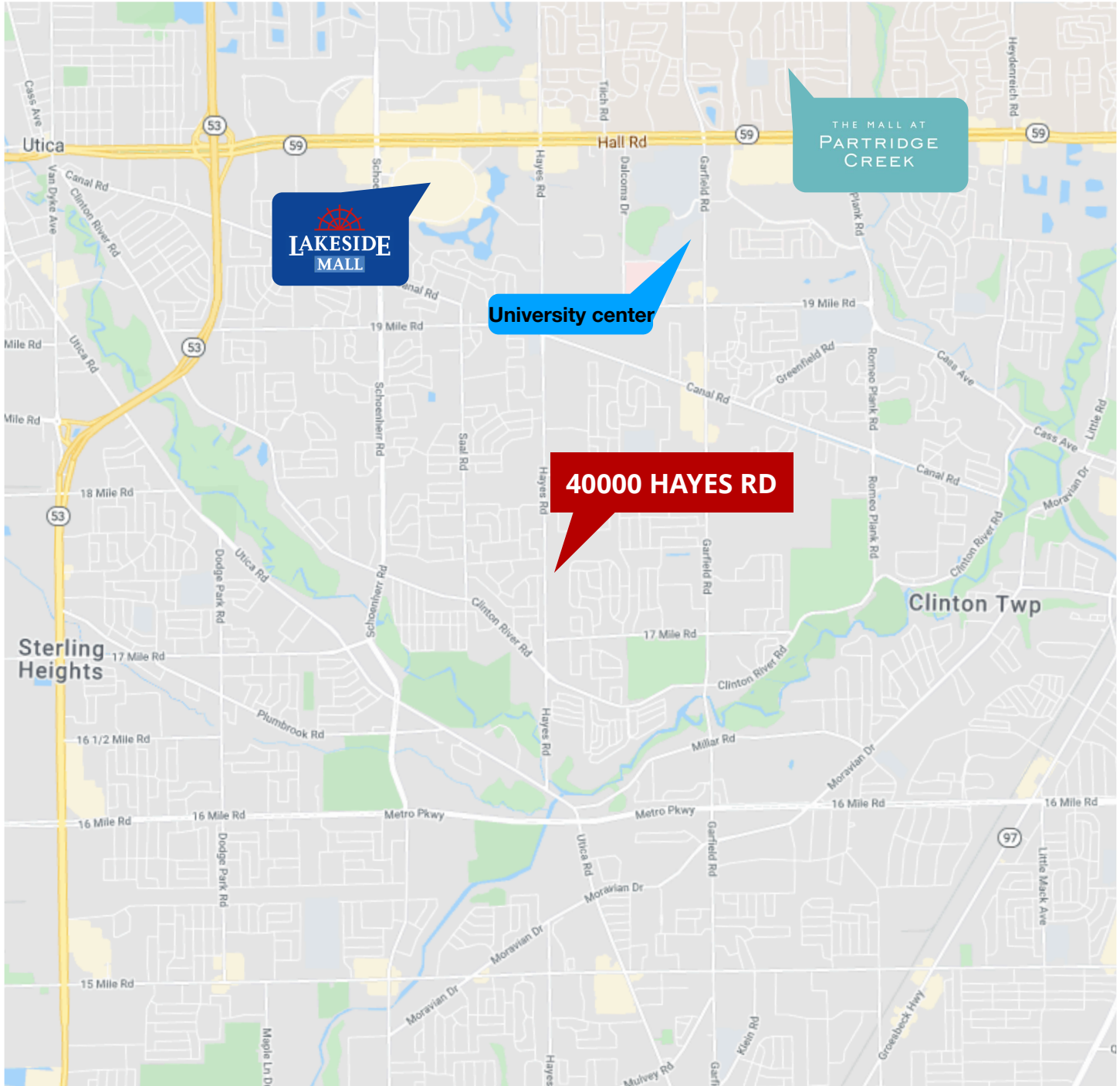
FORWARD COMMERCIAL GROUP
6785 TELEGRAPH RD, SUITE 250
BLOOMFIELD HILLS, MI 48301
www.forwardcommercial.com

Emil Cherkasov
Principal Broker
248.662.5066 Office
emil@forwardcommercial.com



STREET MAP

40000 HAYES RD.
CENTRAL LOCATION
BETWEEN 17 & 18 MILE



FORWARD COMMERCIAL GROUP
6785 TELEGRAPH RD, SUITE 250
BLOOMFIELD HILLS, MI 48301
www.forwardcommercial.com

Emil Cherkasov
Principal Broker
248.662.5066 Office
emil@forwardcommercial.com

