

43700 WOODWARD AVENUE
BLOOMFIELD HILLS, MI 48302



MEDICAL SPACE – FOR LEASE



PROPERTY FEATURES



2,281 SF SUITE | \$19.50/SF/YEAR + GROSS
COMPLETELY RENOVATED MEDICAL SPACE.
EXISTING MEDICAL, OFFICE AND DENTAL SUITES AVAILABLE.
SIGNATURE RIGHTS, EASY ACCESS AND AMPLE PARKING.
STRATEGICALLY LOCATED IN BLOOMFIELD HILLS CLOSE TO I-75,
ST. JOSEPH'S MERCY, SHOPPING, RESTAURANTS & BANKING.

AREA TENANTS



ST. JOSEPH MERCY HOSPITAL
STARBUCKS
CVS PHARMACY
M1 CONCOURSE

PNC BANK
GENISYS CREDIT UNION
STAPLES
COMERICA BANK

AREA DEMOGRAPHICS



TRAFFIC COUNTS: 60,056/DAILY
POPULATION: 169,603
MEDIAN HOME VALUE: \$277,590
RADIUS: 5 MILES

CoStar
POWER BROKER
2018 Top Broker Award

CoStar
POWER BROKER
2017 Top Firm Award

CoStar
POWER BROKER
2017 Top Broker Award

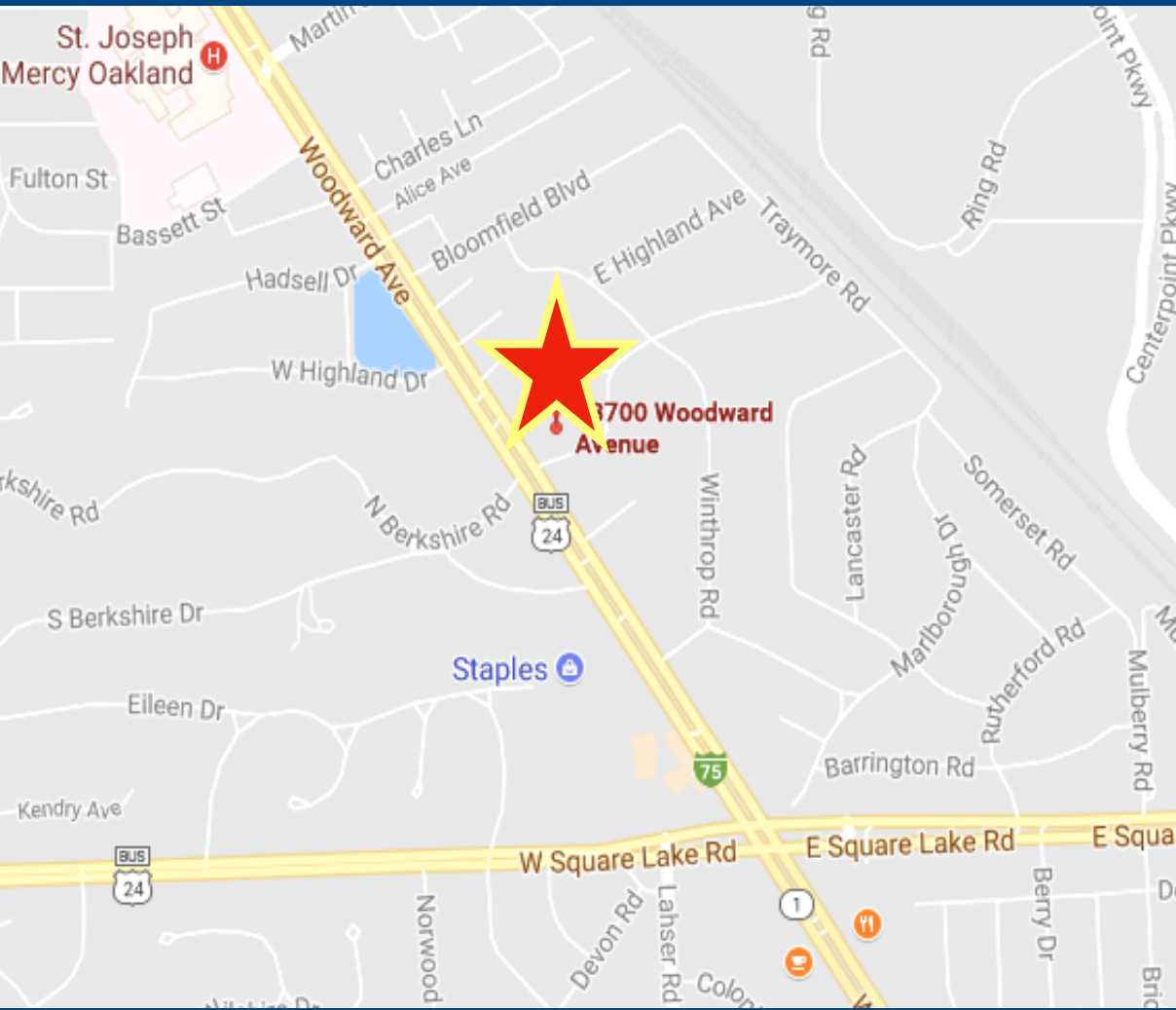
Contact: **Emil Cherkasov** | **248-662-5066** | emil@forwardcommercial.com
www.forwardcommercial.com

Above information is subject to verification and no liability for errors or omissions is assumed. Price is subject to change and listing withdrawn without notice.

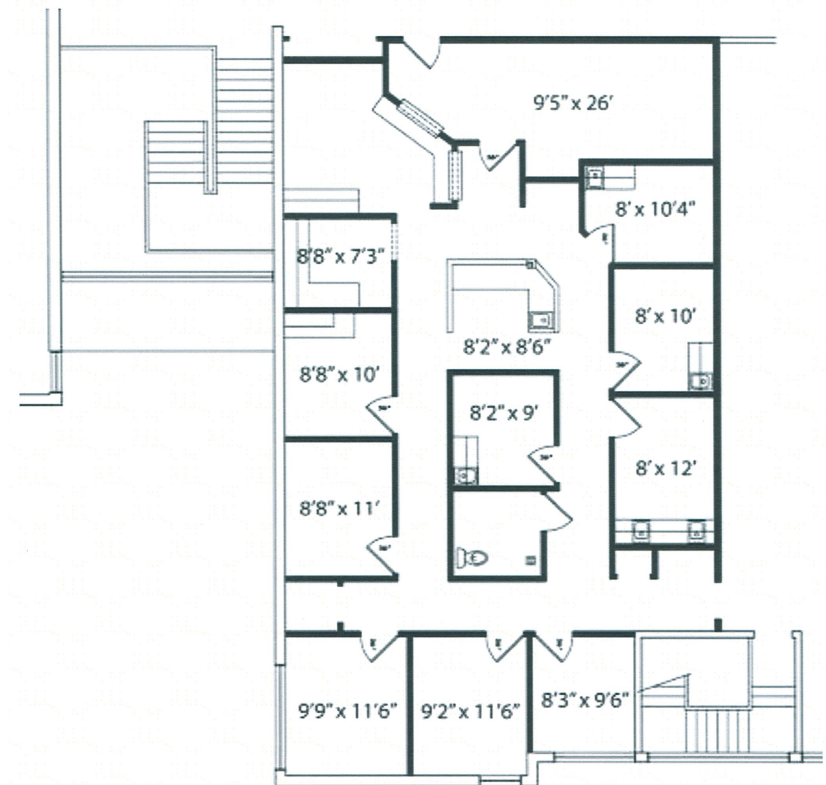
43700 WOODWARD AVENUE
BLOOMFIELD HILLS, MI 48302



MEDICAL SPACE – FOR LEASE



SUITE 202



Contact: **Emil Cherkasov** | **248-662-5066** | emil@forwardcommercial.com
www.forwardcommercial.com

Above information is subject to verification and no liability for errors or omissions is assumed. Price is subject to change and listing withdrawn without notice.

43700 WOODWARD AVENUE
BLOOMFIELD HILLS, MI 48302



MEDICAL SPACE – FOR LEASE



Contact: **Emil Cherkasov** | **248-662-5066** | emil@forwardcommercial.com
www.forwardcommercial.com

Above information is subject to verification and no liability for errors or omissions is assumed. Price is subject to change and listing withdrawn without notice.