

5955 18 MILE ROAD
STERLING HEIGHTS, MI 48314



NEW RETAIL WITH DRIVE-THRU



PROPERTY FEATURES



UP TO 1,500 SF RETAIL WITH DRIVE-THRU PART OF BP GAS.
NORTHEAST CORNER OF 18 MILE & MOUND RD STATION.
GREAT EXPOSURE & SIGNAGE WITH EASY ACCESS VIA M-53 &
M-59. CLOSE TO AREA AMENITIES. DELIVERY SUMMER 2019.
ASKING RATE: \$25/SF/YEAR NNN.

AREA DEMOGRAPHICS



TRAFFIC COUNTS: 66,625
POPULATION: 250,691
TOTAL HOUSEHOLDS: 98,691
MEDIAN HOME VALUE: \$170,645
RADIUS: 5 MILES



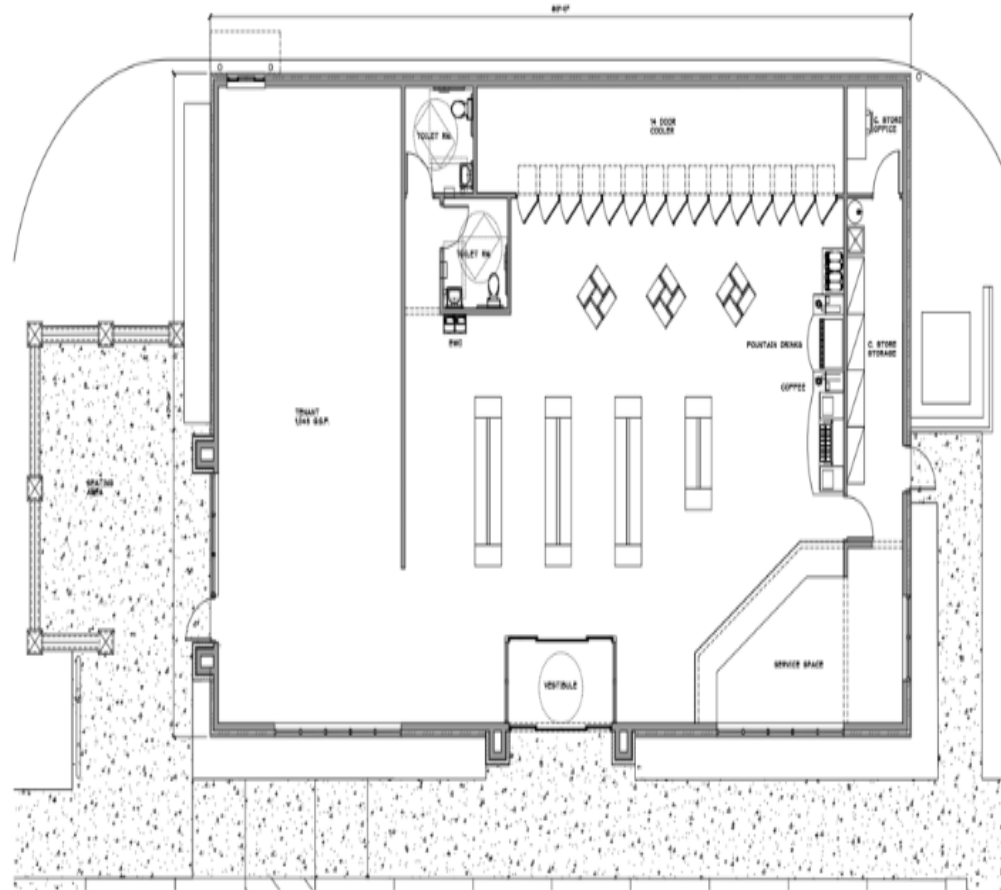
Contact: **Emil Cherkasov** | **248-662-5066** | emil@forwardcommercial.com
www.forwardcommercial.com

Above information is subject to verification and no liability for errors or omissions is assumed. Price is subject to change and listing withdrawn without notice.

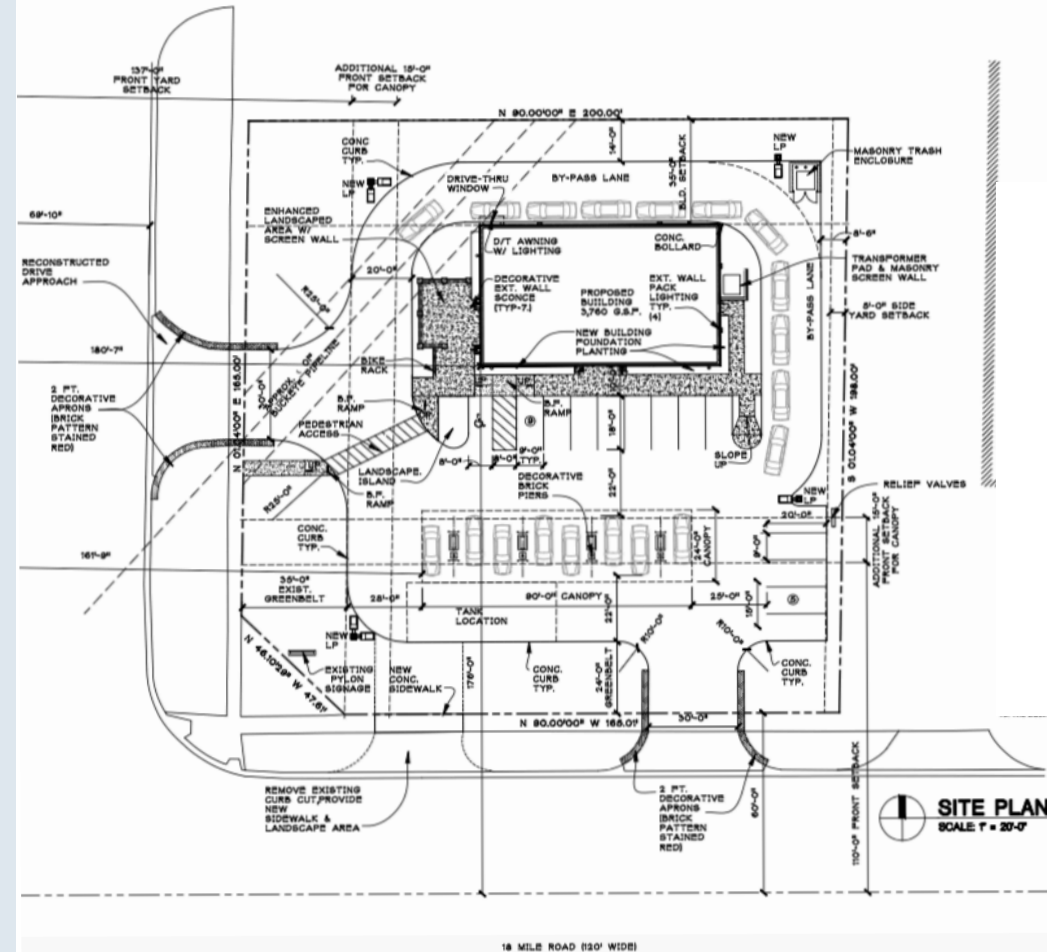
5955 18 MILE ROAD
STERLING HEIGHTS, MI 48314



FLOOR PLAN



SITE PLAN



Contact: **Emil Cherkasov** | **248-662-5066** | emil@forwardcommercial.com
www.forwardcommercial.com

Above information is subject to verification and no liability for errors or omissions is assumed. Price is subject to change and listing withdrawn without notice.